



WMH Herion
part of your drive



Quality racks

Top-class products for highest requirements: as a gearing specialist with decades of experience in the development and manufacturing of drive technology, we understand and meet the expectations of our customers regarding the quality of our products.

With the new quality racks of WMH Herion, we significantly improve our core product: racks of quality classes Q4 and Q5 are now available as individual customer-specific solutions. At the same time we present our new Q5 standard rack series.

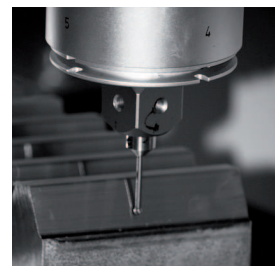
Therefore, from now on an even larger selection of components - with single pitch deviation $f_{p/1000}$ of 4,5 - 6 μm (Q4 racks) and 6 - 8 μm (Q5 racks) and total pitch error $F_{p/1000}$ of 18 - 22 μm (Q4 racks) and 25 - 28 μm (Q5 racks) meeting also the most demanding requirements on precision and quality - is available to our customers and their respective applications.

Characteristics:

- Requirement for low-backlash drives
- Energy-efficient drives with minimal friction losses
- Exact linear positioning
- Optimized for continuous mounting
- Toothing induction hardened
- Standard programme for short delivery time
- Manufacturing of customized types

Applications:

- Laser cutting equipment
- Glass cutting machines
- Precision handling machines
- High-precision machine tools for the machining of various materials



Racks of WMH Herion are manufactured in a consistently high quality and standard in our ISO 9001:2008 certified manufacturing processes. All-over control ensures that we only dispatch products that come up to our high quality standards as well as yours. This way, only the best products make up "Part of Your Drive".



Product sheet Quality racks

WMH Herion offers extensive capabilities for the manufacturing of "Quality racks". To inquire, please contact us!

WMH Herion Antriebstechnik GmbH · Stanglmühle 9-11 · D-85283 Wolnzach · Tel. +49(0)8442/96.99-0 · info@wmh-herion.de · www.wmh-herion.de

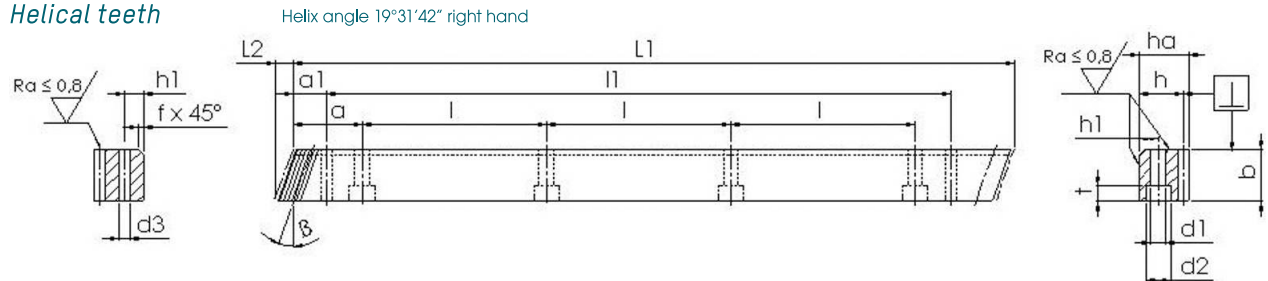


Q5 – Our new rack standard

Racks for continuous mounting with ground teeth, ground rear and side surface

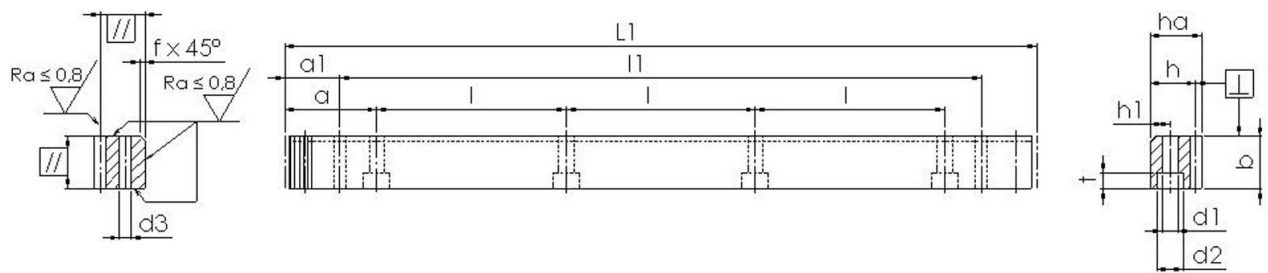
- Toothing quality 5 h23
- Material 1.0503 (C45)
- Induction hardened 50-55 HRC
- Pressure angle 20°

Helical teeth



Module	theor. L ₁	L ₂	No. of teeth	b	h _a	h	f ^{0.5}	a	l	h ₁	d ₁	d ₂	f	a ₁	l ₁	d ₃	kg	Part No.
2	500,00	8,5	75	24	24	22	2	62,5	125	8	7	11	7	31,7	436,6	5,7	2,1	143-020-405-5
2	1000,00	8,5	150	24	24	22	2	62,5	125	8	7	11	7	31,7	936,6	5,7	4,1	143-020-410-5
3	500,00	10,3	50	29	29	26	2	62,5	125	9	10	15	9	35,0	430,0	7,7	2,9	143-030-405-5
3	1000,00	10,3	100	29	29	26	2	62,5	125	9	10	15	9	35,0	930,0	7,7	5,9	143-030-410-5
4	506,66	13,8	38	39	39	35	2	62,5	125	12	10	15	9	33,3	433,0	7,7	5,4	143-040-405-5
4	1000,00	13,8	75	39	39	35	2	62,5	125	12	10	15	9	33,3	933,4	7,7	10,7	143-040-410-5
5	500,00	17,4	30	49	39	34	2	62,5	125	12	14	20	13	37,5	425,0	11,7	6,5	143-050-405-5
5	1000,00	17,4	60	49	39	34	2	62,5	125	12	14	20	13	37,5	925,0	11,7	13,0	143-050-410-5
6	500,00	20,9	25	59	49	43	2	62,5	125	16	18	26	17	37,5	425,0	15,7	9,9	143-060-405-5
6	1000,00	20,9	50	59	49	43	2	62,5	125	16	18	26	17	37,5	925,0	15,7	19,8	143-060-410-5
8	480,00	28,0	18	79	79	71	3	60,0	120	25	22	33	21	120,0	240,0	19,7	21,0	143-080-405-5
8	960,00	28,0	36	79	79	71	3	60,0	120	25	22	33	21	120,0	720,0	19,7	42,5	143-080-410-5
10	1000,00	35,1	30	99	99	89	3	62,5	125	32	33	48	32	125,0	750,0	19,7	68,7	143-100-410-5

Straight teeth



Module	theor. L ₁	No. of teeth	b	h _a	h	f ^{0.5}	a	l	h ₁	d ₁	d ₂	f	a ₁	l ₁	d ₃	kg	Part No.
2	502,65	80	24	24	22	2	62,8	125,66	8	7	11	7	31,3	440,1	5,7	2,1	144-020-405-5
2	1005,30	160	24	24	22	2	62,8	125,66	8	7	11	7	31,3	942,7	5,7	4,2	144-020-410-5
3	508,93	54	29	29	26	2	63,6	127,23	9	10	15	9	34,4	440,1	7,7	3,0	144-030-405-5
3	1017,87	108	29	29	26	2	63,6	127,23	9	10	15	9	34,4	949,1	7,7	6,0	144-030-410-5
4	502,65	40	39	39	35	2	62,8	125,66	12	10	15	9	37,5	427,7	7,7	5,3	144-040-405-5
4	1005,30	80	39	39	35	2	62,8	125,66	12	10	15	9	37,5	930,3	7,7	10,5	144-040-410-5
5	502,65	32	49	39	34	2	62,8	125,66	12	14	20	13	30,1	442,4	11,7	6,7	144-050-405-5
5	1005,30	64	49	39	34	2	62,8	125,66	12	14	20	13	30,1	945,0	11,7	13,4	144-050-410-5
6	508,93	27	59	49	43	2	63,6	127,23	16	18	26	17	31,4	446,1	15,7	10,4	144-060-405-5
6	1017,87	54	59	49	43	2	63,6	127,23	16	18	26	17	31,4	955,0	15,7	20,2	144-060-410-5
8	502,65	20	79	79	71	3	62,8	125,66	25	22	33	21	26,6	449,5	19,7	22,4	144-080-405-5
8	1005,30	40	79	79	71	3	62,8	125,66	25	22	33	21	26,6	952,0	19,7	44,8	144-080-410-5
10	1005,30	32	99	99	89	3	62,8	125,66	32	33	48	32	125,7	754,0	19,7	68,7	144-100-410-5

Modules 1 to 3: tooth flank and tooth root induction hardened (all-tooth hardening), modules 4 to 10: only tooth flank induction hardened (single-tooth hardening). Both ends of the rack are manufactured in such a way that they can be joint together in any length.



Product sheet Quality racks

WMH Herion offers extensive capabilities for the manufacturing of "Quality racks". To inquire, please contact us!

WMH Herion Antriebstechnik GmbH · Stanglmühle 9-11 · D-85283 Wolnzach · Tel. +49(0)8442/96.99-0 · info@wmh-herion.de · www.wmh-herion.de