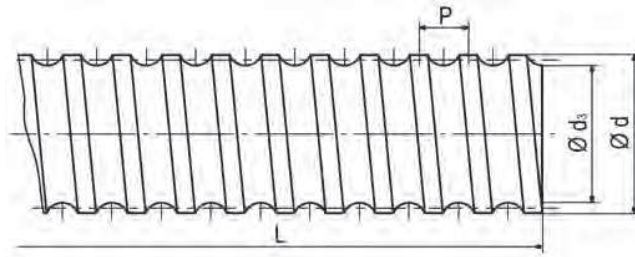
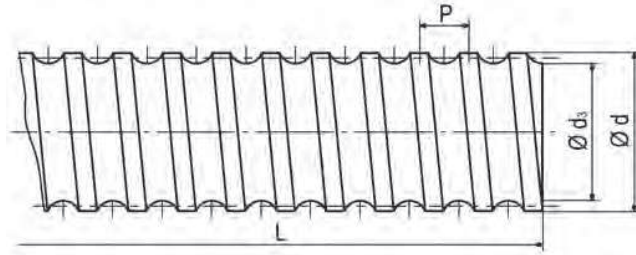


## Kugelgewindespindeln - gerollt, rechtsgängig, Standardprogramm Ball Screw Shafts - Rolled, Right Hand, Standard Range



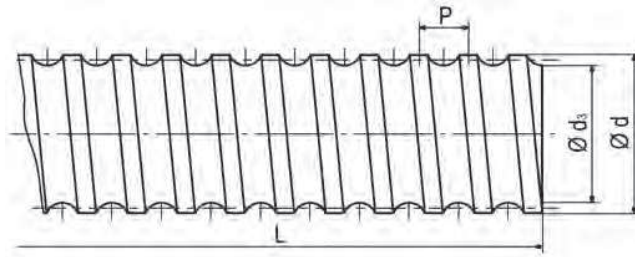
$\frac{Ku}{d \times p}$	Nenn- $\varnothing d$ Nominal $\varnothing d$	Kugel- $\varnothing$ Ball $\varnothing$	Gewindekern- $\varnothing d_3$ Thread root $\varnothing d_3$	L	Bestell Nr. Part No.
10 x 4	10	2,381	7,742	500	R10-4-0500
				1 000	R10-4-1000
12 x 4	12	2,381	9,792	500	R12-4-0500
				1 200	R12-4-1200
12 x 5	12	2,000	9,642	500	R12-5-0500
				1 000	R12-5-1000
14 x 5	14	3,175	11,524	500	R14-5-0500
				1 000	R14-5-1000
				2 000	R14-5-2000
16 x 5	16	3,175	12,899	500	R16-5-0500
				1 000	R16-5-1000
				2 000	R16-5-2000
				3 000	R16-5-3000
16 x 16	16	3,175	13,344	500	R16-16-0500
				1 000	R16-16-1000
				2 000	R16-16-2000
				3 000	R16-16-3000
20 x 5	20	3,175	16,924	500	R20-5-0500
				1 000	R20-5-1000
				2 000	R20-5-2000
				3 000	R20-5-3000
20 x 10	20	3,175	17,300	500	R20-10-0500
				1 000	R20-10-1000
				2 000	R20-10-2000
				3 000	R20-10-3000
20 x 20	20	3,175	17,084	500	R20-20-0500
				1 000	R20-20-1000
				2 000	R20-20-2000
				3 000	R20-20-3000
25 x 5	25	3,175	22,294	500	R25-5-0500
				1 000	R25-5-1000
				2 000	R25-5-2000
				3 000	R25-5-3000
				4 500	R25-5-4500
25 x 10	25	4,763	21,232	500	R25-10-0500
				1 000	R25-10-1000
				2 000	R25-10-2000
				3 000	R25-10-3000
				4 500	R25-10-4500
25 x 25	25	3,969	21,974	500	R25-25-0500
				1 000	R25-25-1000
				2 000	R25-25-2000
				3 000	R25-25-3000
				4 000	R25-25-4000

## Kugelgewindespindeln - gerollt, rechtsgängig, Standardprogramm Ball Screw Shafts - Rolled, Right Hand, Standard Range



$\frac{Ku}{d \times p}$	Nenn-Ø d Nominal Ø d	Kugel-Ø Ball Ø	Gewindekern-Ø d <sub>3</sub> Thread root Ø d <sub>3</sub>	L	Bestell Nr. Part No.
32 x 5	32	3,175	29,124	500	R32-5-0500
				1 000	R32-5-1000
				2 000	R32-5-2000
				3 000	R32-5-3000
				4 500	R32-5-4500
32 x 10	32	6,350	27,770	500	R32-10-0500
				1 000	R32-10-1000
				2 000	R32-10-2000
				3 000	R32-10-3000
				4 500	R32-10-4500
32 x 20	32	6,350	27,790	1 000	R32-20-1000
				2 000	R32-20-2000
				3 000	R32-20-3000
				4 000	R32-20-4000
32 x 32	32	4,763	28,392	1 000	R32-32-1000
				2 000	R32-32-2000
				3 000	R32-32-3000
				4 500	R32-32-4500
38 x 40	38	6,350	32,910	1 000	R38-40-1000
				2 000	R38-40-2000
				3 000	R38-40-3000
				4 500	R38-40-4500
40 x 5	40	3,175	36,754	1 000	R40-5-1000
				2 000	R40-5-2000
				3 000	R40-5-3000
				4 500	R40-5-4500
40 x 10	40	6,350	35,360	1 000	R40-10-1000
				2 000	R40-10-2000
				3 000	R40-10-3000
				4 000	R40-10-4000
				5 600	R40-10-5600
40 x 20	40	6,350	32,820	1 000	R40-20-1000
				2 000	R40-20-2000
				3 000	R40-20-3000
				4 000	R40-20-4000
				5 600	R40-20-5600
40 x 40	40	6,350	35,410	1 000	R40-40-1000
				2 000	R40-40-2000
				3 000	R40-40-3000
				4 000	R40-40-4000

## Kugelgewindespindeln - gerollt, rechtsgängig, Standardprogramm Ball Screw Shafts - Rolled, Right Hand, Standard Range



$\frac{K_u}{d \times p}$	Nenn- $\varnothing$ d Nominal $\varnothing$ d	Kugel- $\varnothing$ Ball $\varnothing$	Gewindekern- $\varnothing$ $d_3$ Thread root $\varnothing$ $d_3$	L	Bestell Nr. Part No.
50 x 5	50	3,175	46,744	1 000	R50-5-1000
				2 000	R50-5-2000
				3 000	R50-5-3000
				4 000	R50-5-4000
				5 600	R50-5-5600
50 x 10	50	6,350	45,440	1 000	R50-10-1000
				2 000	R50-10-2000
				3 000	R50-10-3000
				4 000	R50-10-4000
				5 600	R50-10-5600
50 x 40	50	6,350	45,000	1 000	R50-40-1000
				2 000	R50-40-2000
				3 000	R50-40-3000
				4 000	R50-40-4000
				5 000	R50-40-5000
50 x 50	50	7,938	44,788	1 000	R50-50-1000
				2 000	R50-50-2000
				3 000	R50-50-3000
				4 000	R50-50-4000
				5 600	R50-50-5600
63 x 10	63	6,350	58,044	1 000	R63-10-1000
				2 000	R63-10-2000
				3 000	R63-10-3000
				4 000	R63-10-4000
				5 600	R63-10-5600
63 x 20	63	9,525	56,280	1 000	R63-20-1000
				2 000	R63-20-2000
				3 000	R63-20-3000
				4 000	R63-20-4000
				5 600	R63-20-5600
80 x 10	80	6,350	74,840	1 000	R80-10-1000
				2 000	R80-10-2000
				3 000	R80-10-3000
				4 000	R80-10-4000
				5 600	R80-10-5600
80 x 20	80	9,525	73,076	1 000	R80-20-1000
				2 000	R80-20-2000
				3 000	R80-20-3000
				4 000	R80-20-4000
				5 600	R80-20-5600